



ASSOCIATION
DES PROGRAMMES
UNIVERSITAIRES
AMÉRICAINS
EN FRANCE

COVID-19 Info Sheet France

Compiled by:
APUAF COVID-19 Committee
Last Updated: June 9, 2021

INTRODUCTION

The COVID Info Committee continues to update this compilation of COVID-19 protocols and guidelines as established by the French authorities to keep APUAF members, their partners and their students informed of openings and restrictions across the country as they evolve.

The committee in charge of the research, translation and scope of this document seeks simply to provide a short-cut summary of information (relevant to the field of International Education in France) that is widely accessible, yet often only published in French, on various different official government websites and through communiqués provided by the French government and the ensemble of its Ministries, the French Consular offices, the *Préfectures*, local government resources & announcements, and protocols established by French Federations.

We encourage readers to access the links to the original sources provided in each category of information in this report. **The APUAF COVID-19 Committee will update this compilation periodically, at least once a month, for the coming months.**

The situation evolves quickly and continually, and as such, APUAF recommends that all readers verify the information provided below before making definitive decisions. This Info Sheet does not intend to interpret information provided by the French authorities, nor does it seek to advise readers. Its purpose is to simply compile information from official sources to provide a convenient resource in English for APUAF members and their partners.

Much of the information in this report concerns the general state of affairs in France. Local websites (*préfecture*, *mairie*, etc) give more detailed information on a regional or municipal level.

SECTION 1: INTERNATIONAL MOBILITY

Who is authorized to travel from the U.S. to France?

On June 4, 2021, the French government confirmed that French borders will open to tourist and short-term visitors starting on June 9th.

Details in English are available on the Campus France website: <https://www.usa.campusfrance.org/covid-19-faqs> and here: https://www.diplomatie.gouv.fr/IMG/pdf/dp_ouverture_frontieres and in French on the French government website: <https://www.gouvernement.fr/info-coronavirus/loisirs>.

A press release (in French) that gives full details for the border opening strategy can be found here: <https://www.gouvernement.fr/voyager-depuis-et-vers-l-etranger-mode-d-emploi>. The “*dossier de presse*” available at the very bottom of this webpage (see image) is a 6-page pdf that gives full details for travelling into France (in French). For the English version, see and <https://www.diplomatie.gouv.fr/en/coming-to-france/coronavirus-advice-for-foreign-nationals->.

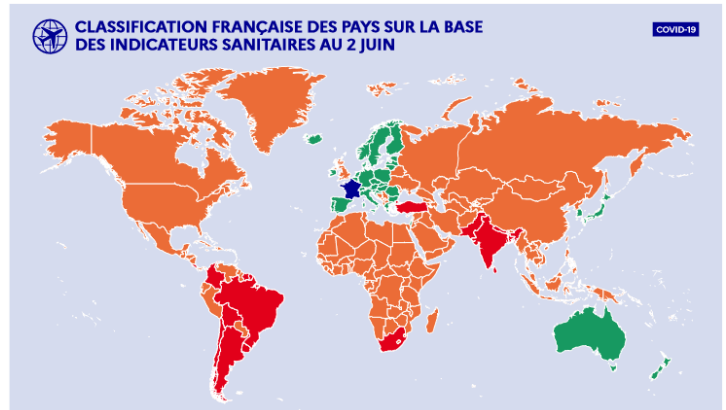


Dossier de presse - La stratégie de réouverture des frontières

PDF - 1.2 Mo

↓
Télécharger

Countries are listed as **Green**, **Orange** or **Red**, depending on the level that COVID is circulating and the status of dangerous variants in each country. Different travel requirements are associated with each group.



Color Codes as of June 2

Green: no or little viral circulation:

- European Union and Schengen Area countries (including Andorra, Iceland, Liechtenstein, Monaco, Norway, San Marino, Switzerland, and the Vatican), Australia, South Korea, Israel, Japan, Lebanon, New Zealand and Singapore.
- **Vaccinated** travelers from Green countries can travel freely to France without PCR testing prior to travel
- **Non-vaccinated** travelers must provide a negative PCR result (test taken within 72h of boarding).

Orange: a moderate and “controlled” level of viral circulation:

- All countries that are not currently classified as “Green” or “Red”, including the U.S. and the U.K.
- **Vaccinated** travelers from Orange countries must provide a negative test result (PCR within 72h of boarding or Antigen within 48h).
- **Non-vaccinated** travelers must adhere to the following requirements to travel:
 - A compelling reason for travel to France (see list below)
 - A recent negative test result (PCR within 72h of boarding and antigen, within 48h).
 - Random Covid testing upon arrival at the airport
 - Self-isolation for 7 days.
- Compelling reasons that allow **non-vaccinated** travelers to enter France include (among others):
 - Students registered at an institution of higher ed for programs in France of over 90 days.
 - Researcher (and family) coming to France at the invitation of a research lab for work that must be done in person.
 - Travelers in transit through France for under 24 hours in international zones

Red: a high level of virus circulation and of COVID variants - travel is discouraged:

- South Africa, Argentina, Bahrein, Bangladesh, Bolivia, Brazil, Chili, Colombia, Costa Rica, India, Nepal, Pakistan, Sri Lanka, Surinam, Turkey and Uruguay.
- **Vaccinated** travelers must adhere to the following requirements to travel:
 - A compelling reason for travel to France
 - A recent negative test result (PCR within 72h of boarding and antigen, within 48h).
 - Random Covid testing upon arrival at the airport
 - Self-isolation for 7 days
- **Non-vaccinated** travelers must adhere to the same requirements except they are subject to systematic Covid testing upon arrival and will have to quarantine for 10 days under supervision by authorities.

What is required to travel from the U.S. to France?

Travelers who are **VACCINATED**:

- Must show proof of vaccination
- No need for compelling reasons to enter France
- Must show a PCR negative 72 hours max, or an Antigen test negative 48h max before flight departure
- No need to be tested upon arrival
- No quarantine upon arrival

Travelers who are **NOT VACCINATED**:

- Must show a valid compelling reason to come to France
- Must show a PCR negative 72 hours max, or an Antigen test negative 48h max before flight departure
- Could be asked to take an Antigen test upon arrival

- Must self-isolate for 7 days upon arrival in France

Vaccinations that are accepted for entry into France: **Pfizer, Moderna, AstraZeneca and Johnson & Johnson**

<https://www.ema.europa.eu/covid-19-vaccines> .

- Proof of vaccination must be produced and must attest to a full vaccination
- One can travel 2 weeks after the second injection for Pfizer, Moderna and AstraZeneca
- One can travel 2 weeks after the single injection for those who have recovered from COVID
- One can travel 4 weeks after the injection of J&J

Non-vaccinated travelers must comply with the following restrictions:

- **Complete the 2 forms** listed under **case scenario #2** at this website: <https://www.interieur.gouv.fr/Actualites/L-actu-du-Ministere/Attestation-de-deplacement-et-de-voyage#from8>
 1. **2.1** : Under heading : « Certificate to enter Metropolitan France for citizens from a country outside the European Area ». (This form exists for European Area citizens and for non-European Area citizens, and in French and English).
 2. **2.2** : Under heading : « Statement for travelers aged 11 years and over ». (This form exists for travelers under 11 years old, and in French and English)
- Travelers aged 11 or older from the United States **must provide the results of a PCR test taken less than 72 hours before departure** indicating a negative result for COVID-19.
 - In the case of multiple flights in the same travel itinerary, the test must be taken 72h before the first flight departs.
 - If you are not able to provide evidence of this test or a certificate of exemption, boarding will be denied.
- **Provide a “contact” sheet** with proof of housing and your residence address in France
- Upon entering France, **you are required to self-isolate** (at home, not in quarantine housing) upon arrival **for 7 days and take a second test at the end of that period.** [Advice-for-foreign-nationals-in-france](#)



Student Visas

As of June 9th, international students are authorized to enter France depending on the status of their vaccination.

- **Vaccinated** and **non-vaccinated** students coming to France for semester and year-long academic programs (over 90 days)
- **Fully vaccinated** students coming for short study-abroad programs (under 90 days).
- **Non-vaccinated** students must obtain a visa and comply with all requirements made by the Ministry of the Interior : <https://www.interieur.gouv.fr/Actualites/L-actu-du-Ministere/Certificate-of-international-travel#from8>.

The certificate lists the following as a compelling reason for **non-vaccinated** travelers, giving an indication that non-vaccinated travelers can enter France if they are enrolled in a FLE program or concours, but without clearly stating the minimum length of stay:

8. Students enrolled in French as a foreign language (FLE) courses prior to enrollment in higher education or admitted to the oral examinations in French higher education institutions or registered for the start of the 2021-2022 school year; Researcher settling in France at the invitation of a research laboratory, for research activities which imperatively require a physical presence as well as their spouse (married, civil union, cohabiting on presentation of proof of community of life) and children.

However, Campus France USA has published here that non-vaccinated students cannot enter France for programs under 90 days: [Campus France Student Visa FAQ](#)

*Students travelling from the U.S. to France who are **not vaccinated** may travel for academic programs of over 90 days **only**; they must obtain a student visa. Higher education is considered an essential reason for travel as indicated in the Certificate to Enter Metropolitan France linked below. These students must present a negative COVID-19 PCR test taken no more than 72 hours before the flight or a negative antigen COVID-19 test taken no more than 48 hours before the flight, must complete a 7-day*

self-isolation upon arrival, and may be subject to additional antigen testing. Non-vaccinated travelers must complete the Certificate to Enter Metropolitan France and the Health Control Measures forms found here on the [website of the French Ministry of the Interior](#).

All VFS Centers in the U.S. are open and accepting student visa appointments for students authorized to enter France. French Consulates continue their service of delivering visas to international students authorized to travel. https://france-visas.gouv.fr/en_US/web/france-visas/welcome-page

Leaving France & entering the United States

France requires all passengers leaving the EU to comply with the restrictions for international travel:

Non vaccinated persons wishing to leave France to travel to a country outside the EU that is currently classified as **Orange** or **Red** must

- have a compelling health, family or economic-related reason for their journey (see, in French, the June 4 press release: [Dossier de presse reouverture des frontieres 9 juin.pdf](#) or in English here: <https://www.diplomatie.gouv.fr/en/coming-to-france/coronavirus-advice-for-foreign-nationals->)
- Fill out the corresponding Certificate of Travel. **Case scenario #1** at this website: <https://www.interieur.gouv.fr/Attestation-de-deplacement-et-de-voyage>
- “Returning to the country of residence or origin” is among the compelling reasons.

The CDC requires that all air passengers (**vaccinated** and **non-vaccinated**) arriving to the U.S. from a foreign country to provide proof of a negative test result (less than 72h prior to departure) or proof of recovery from COVID-19 before boarding the flight. <https://www.cdc.gov/coronavirus/2019-ncov/travelers/testing-international-air-travelers.html>

- This order applies to all air passengers, 2 years of age or older, travelling into the U.S., including U.S. citizens and legal permanent residents.
- Test must be a viral test (NAAT or antigen test). The CDC offers here a checklist of tests and/or documents necessary for air travel to the US. [Airline Testing Order Checklist-p.pdf](#)

Upon entry in the U.S., the [CDC recommends](#), but does not currently require:

For **Vaccinated** Travelers

- Getting a new COVID test 3-5 days after travel & self-monitoring for COVID symptoms

For **non-vaccinated** Travelers

- Getting a new COVID test 3-5 days after travel, and a self-quarantine period of 7 days or 10-day quarantine if you do not get tested upon return.
- Self-monitoring for COVID symptoms & avoiding people at increased risk of illness for 14 days.

International Travel Recommendations and Requirements	Not Vaccinated	Fully Vaccinated
Get tested 1-3 days before traveling out of the US	Yes	
Mandatory test required before flying to US	Yes	Yes
Get tested 3-5 days after travel	Yes	Yes
Self quarantine after travel for 7 days with a negative test or 10 days without test	Yes	
Self-monitor for symptoms	Yes	Yes
Wear a mask and take other precautions during travel	Yes	Yes

Last Updated May 19, 2021
Content source: National Center for Immunization and Respiratory Diseases (NCIRD), Division of Viral Diseases

Travelers should look into local and state recommendations or requirements in the U.S. by accessing this travel planner: [CDC COVID Travel Planner](#)

SECTION 2: HEALTH SERVICE ACCESS & CAPACITY

Access to protective equipment (masks, gloves, gel)

All pharmacies and most grocery chains in France currently have low priced equipment available.

- **Disposable surgical masks** are available at approximately 15 to 25 cents each.
- Certified 'Grand Public' **re-usable masks** cost about 2 euros each and come in 2 different categories: Category 1 masks filter approximately 90% of particles and Category 2 masks filter 70%. Annex 3 of the National Protocol for Staying Healthy & Safe at Work states that only official PPE, surgical masks or Category 1 masks should be worn in public. [National Workplace Protocol](#)
- **Disinfectant gel** costs about 10-12 euros per liter. There are also public gel dispensers (free) in some cities in France, and almost all places of business have gel dispensers available for customer use.
- France currently has sufficient **protective gloves** available for the general public.

7 Day self-isolation period

Starting June 9, there is an obligatory self-isolation period of 7 days for the arrival of the following travelers:

- Non-vaccinated people coming into France from an **Orange** country
- Vaccinated people coming into France from a **Red** country. (Note: un-vaccinated people coming from a Red country must complete a 10 day quarantine, not self-isolation, under supervision by authorities)

The state health insurance website, [Ameli.fr](https://www.ameli.fr) gives detailed advice (in French) for limiting contact with others and keeping living conditions clean during self-isolation. Campus France describes the conditions of the 7-day quarantine: [Campus France Recommendations including description of Quarantine](#) (in French) and [Campus France Recommendations including description of Quarantine](#) (in English).

- Stay at home as much as possible and limit your time outside to essential needs
- Respect the curfew in place from 11pm to 6am
- Always wear a mask in the presence of another person, and avoid contact with other people in your residence/at home
- Follow the official information from the French Government
- Contact your school for distance learning support for your courses
- If your accommodation is a university residence, inform the administration that you are quarantining so that cleaning and disinfection measures can be implemented
- Download the TousAntiCovid app on your phone (see page 8, section titled “Tools”)
- In case of symptoms, contact a doctor immediately

Access to health care & hospitalization

- The government has created a platform mesconseilscovid.sante.gouv.fr which allows anyone with symptoms to obtain within 3 minutes personalized advice as to how to proceed (for treatment, testing, etc.) and how to protect oneself and others.
- Web-based platforms and apps such as “Doctolib” allow students to book medical appointments, PCR tests and Vaccination appointments across the country with ease. <https://www.doctolib.fr/>
- Virtual consultations and in-person appointments with general practitioners are readily available as early as same day.
- Same day house-calls are also available in most French cities (through services such as SOS Médecins or UMP). <https://www.sosmedecins.fr/> and <https://www.ump.fr/>
- Students have access to all French public hospitals where there is a dedicated space for COVID patients.
- French Hospitals are currently at 47% capacity for intensive care/*reanimation* beds. This statistic compares number of COVID patients hospitalized currently compared to number of intensive care beds available BEFORE the pandemic, and thus does not count the additional beds and services put in place in 2020 and 2021. Statistics can be tracked here: [France COVID Dashboard](#).

Access to testing

Three kinds of diagnostic COVID tests are currently available in France to test patients for COVID.

1. **The (RT-PCR) test** to determine if the patient has COVID at the time of the test.
 - Results are available within 24 – 36 hours.
 - France currently is performing 1.3-1.4 million tests per week.
 - 100% covered by Social Security and do not require prescription. Otherwise, out of pocket costs are approximately 70-80 euros per test. <https://fr.usembassy.gov/covid-19-information/>
 - They are administered in testing centers, medical facilities and labs but also by nurses, medical students, paramedics, firemen, etc. There are currently over 12 000 testing centers across France. [COVID Testing Sites in France](#)
 - **Who can be tested (RT-PCR)?** Anyone can benefit from a test. There is no need to show symptoms.
2. **Saliva Test:** COVID-19 saliva tests are currently in use in primary and secondary schools as well as universities : <https://www.education.gouv.fr/covid19-un-acces-prioritaire-aux-tests-pour-les-personnels-de-l-education-nationale-et-pour-les-307814>

3. **The Antigen Test** to determine if the patient has COVID at the time of the test. <https://www.service-public.fr/particuliers/actualites/A14435>

- Results within 15-30 minutes
- Available especially in pharmacies and at airports.
- 100% covered by Social Security and do not require a prescription. Patients who don't have French Social Security currently may have to pay out of pocket (34 euros).
- **Who can be tested (Antigen)?**
Patients with symptoms can opt for this test if they fulfill the following criteria:
 - ✓ Within 4 days of first symptoms
 - ✓ No underlying conditions, meaning not susceptible to developing a serious form of Covid.
 Patients without symptoms who:
 - ✓ Have been asked to be tested as part of an institutional testing program (at schools and universities, workplaces, etc.)
 - ✓ Need to be tested as a requirement before a medical appointment
 - ✓ Wish to be screened at any time
- **Auto-test Antigen Tests** are available in pharmacies starting April 12, 2021. Results within 15-20 minutes and price capped at 6 euros.
- Patients who test positive in an Antigen test are asked to confirm result with a PCR test

An Immunity Test (blood test) is available in France to determine if the patient has developed immunity to COVID. These tests are administered mostly in labs and sometimes might require a prescription. They are 100% covered by Social Security and otherwise out of pocket costs are approximately 20 euros per test.

Steps to take for testing

Precise procedures have been put in place for different case scenarios. Details can be found and downloaded here for anyone in these groups: [Steps to Take to be Tested](#)

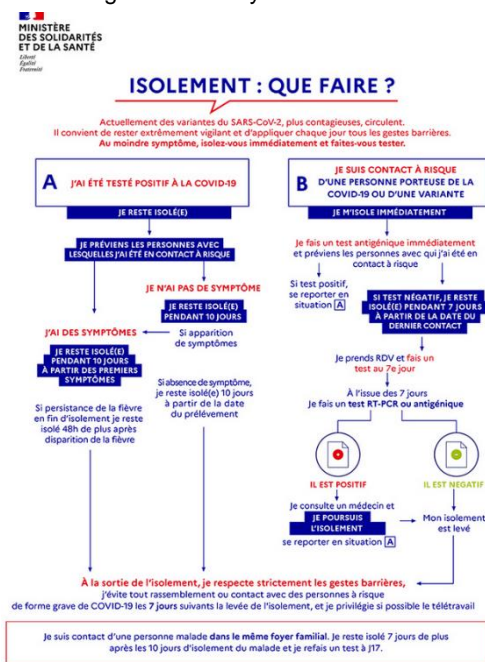
- I don't present any symptoms and I would like to be tested: free test, no prescription needed, PCR results within approximately 24h, or Antigen test results in 15-30 min.
- I have symptoms: specific protocol for testing to avoid contact with others during testing and until results are in. Free test, no prescription needed, PCR results within approximately 24h, Antigen results in 15-30 min
- I have been in contact with a person who has tested positive: Antigen or PCR test
- A specific function is available through the website & application **Doctolib** to locate the testing center or lab closest to you with the earliest available appointments for a test.
- Students who don't have French Social Security have total access to testing but may need to front the cost of the test and submit to their personal health insurance after if COVID testing is covered by their insurance policy.

Tracking

All COVID patients must provide a local doctor with the list of people with whom they have been in touch within 48 hours of the first symptoms. Medical authorities will contact every person on that list and require testing (see above).

Anyone who has been in contact with someone who has tested positive must follow a specific protocol [Steps to Take to be Tested](#):

- Wear a certified mask at all times when in contact with others, isolate immediately.
- Take an antigen test immediately. If negative, stay isolated 7 days after the last contact with the COVID patient.
- After 7 days, take a PCR or antigen test
- Stay in quarantine for until the test results are in
- **Anyone who tests positive for COVID-19 must isolate for 10 days** after signs of first symptoms, or if asymptomatic, after test date. <https://www.ameli.fr>



Vaccinations

France's vaccination strategy has been established by the HAS (*Haute Autorité de Santé*) who has published the order of priority populations to be vaccinated. [Vaccination Strategy & FAQ](#)

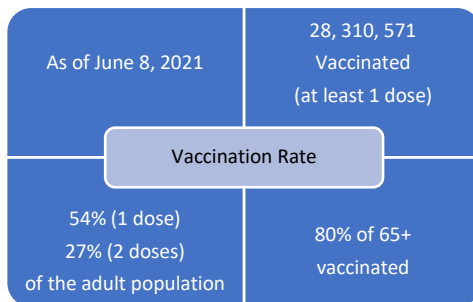
France's vaccination strategy follows 3 main principles:

- Freedom of choice: the vaccination is not obligatory
- Free of charge: the vaccination is available for free in France (for those with French Social Security)
- Security: the vaccination follows all strict guidelines that frame the use of medical products in France

[Vaccination Dashboard](#)



People who have been vaccinated are still required to follow all COVID-19 protocols in private and public spaces, in workplaces and in schools.



	Category eligible for vaccination
CURRENTLY	Anyone over 18 yrs old
Starting June 15	Anyone between 12-17 yrs old

SECTION 3: RESTRICTIONS RELATED TO COVID-19

4-Step Re-opening plan: May 3 to June 30, 2021

On April 30, 2021, the government announced a 4-step plan for re-opening starting May 3. Re-opening can be temporarily paused or delayed for any region where certain sanitary conditions are not met. Re-opening is intentionally progressive, cautious, and conditional upon compliance with defined capacity limits and protocols. [les-quatre-etapes-du-deconfinement](#)

We are currently in Step 3. For more details concerning each step, a 36 page document published on May 14th is available on the government website: [Full Detail Re-Opening Agenda](#)

Step 3: June 9

- Daily curfew pushed back to 11pm
- Re-opening of all cafés & restaurants for indoor dining (6 people maximum per table)
- Limited return to workspace for offices still on telework
- Sports, cultural venues, international trade fairs & exhibitions open up to 5,000 people
- Re-opening of gyms, sports halls, to include open-air contact sports and inside non-contact sports
- Lifting of travel restrictions for foreign visitors coming into France (with a Pass Sanitaire)

ÉTAPE 3 9 juin	
<ul style="list-style-type: none"> • Couvre-feu décalé à 23 heures • Réouverture* des cafés et restos (tables de 6 personnes maxi.) • Possibilité d'accueillir jusqu'à 5 000 pers. dans les lieux de culture et les étab. sportifs*** • Accueil des touristes étrangers avec pass sanitaire 	<ul style="list-style-type: none"> • Assouplissement du télétravail • Réouverture* des salons et foires (jusqu'à 5 000 pers.)*** • Réouverture* des salles de sport, élargissement aux sports de contact en plein air et sans contact en intérieur

ÉTAPE 4 30 juin	
<ul style="list-style-type: none"> • Fin du couvre-feu • Maintien des gestes barrières et de la distanciation sociale • Possibilité de participer aux événements de plus de 1 000 pers. en extérieur et en intérieur*** 	<ul style="list-style-type: none"> • Fin des limites de jauge selon la situation sanitaire locale dans les étab. recevant du public • Limite maxi. de public selon l'événement et la situation sanitaire locale

* RÉOUVERTURES CONDITIONNÉES AU RESPECT DE JAUGES ET PROTOCOLES ADAPTÉS À CHAQUE LIEU ET ACTIVITÉ. L'INFORMAGRAPHE, 29/04/2021.
** 800 EN INTÉRIEUR, 1 000 EN EXTÉRIEUR. *** AVEC PASS SANITAIRE.

Step 4: June 30

- End of daily curfew
- Events of up to 1,000 people indoor or outdoor permitted
- Nightclubs remain closed

Tools

In addition to consulting the general government websites that communicate all essential information concerning the virus, restrictions, and the re-opening period, everyone is asked to download the app **TousAntiCovid**, which serves several functions:

- **Tracking:** the app alerts users if they are in close contact with a Covid patient
- **Information:** the app publishes the daily stats concerning the virus
- **Testing:** the app can be used to locate the nearest testing center
- **Documentation:** the app can generate a digital authorization form needed to be outside after curfew.
- **Pass Sanitaire:** the app has a function that stores COVID test results and vaccination certificates which will help facilitate travel and access to certain events. (This can also be accomplished through the paper version of the Pass Sanitaire). The Pass Sanitaire functionality is in place as of June 9 and consists of one of the following (paper or digital format accepted):

- Proof of full vaccination (2 weeks after last/final dose of Astra Zenica, Moderna and Pfizer, 4 weeks after J&J)
- Negative PCR or Antigen test results within 48h (for events) or 72h (for travel outside of France)
- Positive PCR or Antigen test results that are at least 2 weeks old and less than 6 months.

<https://www.gouvernement.fr/pass-sanitaire-toutes-les-reponses-a-vos-questions>



Les 3 preuves pouvant être intégrées dans le pass sanitaire :

1. Un schéma vaccinal complet
2. Un test PCR ou antigénique négatif de moins de 48h
3. Un test PCR ou antigénique positif de plus de 15 jours et moins de 6 mois

This app which uses Bluetooth technology for tracking and does not share personal identification information. Use of the app for everyone, including COVID patients, is voluntary. [TOUS ANTI COVID Tracking App](#)

The French government has put in place a **24/7 hotline** (in French only) to respond to any questions concerning COVID-19 (health, regulations, workplace, social services, legal, civil, childcare and education, travel and leisure activities, etc.). A WhatsApp group managed by the government provides an additional Q&A source for anyone who wishes to join: [WhatsApp with Government](#)



ViteMaDose
par CovidTracker

Vaccinations: Vite Ma Dose is a service that centralizes several online portals where people can sign up for a vaccination appointment. <https://vitemadose.covidtracker.fr/>.

Daily Curfew

At this time, there is a nation-wide stay-at-home curfew from 11pm to 6am. Any outing made during **curfew** hours (11pm to 6am) must fall into the below categories:

- Going to and from work or school
- Medical care and medical appointments that cannot be done remotely
- Essential family duties including helping a vulnerable family member or caring for children
- All outings necessary for disabled people and those who accompany them
- For administrative or judicial appointments
- Transit to take a train, plane or bus for travel
- Walking a pet (maximum 1km from residence for a brief period of time)

For any justifiable outing after curfew, it is mandatory to have an authorization form found here:

- [Online \(printable\) authorization forms](#) in English and in French
- [Online \(digital\) authorization form in French](#) (also available via the TousAntiCovid app)



Wearing Masks

It is required to wear a mask at all times when outside of one's residence. [How to Wear a Mask](#). Only those jogging/running or riding a mechanical bicycle are exempt from wearing masks. [Information concerning masks](#)

Schools

All pre-schools, primary and middle schools are currently open for in-person instruction. High schools are still operating with a hybrid learning model, at half capacity. <https://www.gouvernement.fr/info-coronavirus/education>).

The government has implemented a massive Covid testing program to reduce contamination risks in schools. Saliva tests are given to primary and middle school students; rapid self-tests are distributed to teachers, staff and high school students over 15 years old.

<https://www.gouvernement.fr/reouverture-des-ecoles-la-continuite-pedagogique-sans-risque-sanitaire>

Higher Education

Starting Fall 2021 semester: Frédérique Vidal, the Minister of Higher Education in France, announced that the government is preparing for the new school year 2021/2022 to be **100% in person instruction**.

<https://www.enseignementsup-recherche.gouv.fr/cid158698/preparation-de-la-rentree-2021> and <https://www.vie-publique.fr/discours/279764-frederique-vidal-27042021-retour-des-etudiants-en-presentiel-examens>

Several official government websites give detail concerning academic and campus life during the COVID crisis.

- [Ministry of Higher Education general Covid info](#)
- [Official Student Life website confinement info](#)
- [Ministry of Higher Education campus confinement details](#)

International Students: International students continue to be welcomed into France provided they satisfy the French government's current conditions of coming to France for participation in a short-term program (starting June 9) or semester program (over 90 days). The French government has announced that international students currently in France can apply for and/or renew residency permits, online, thus avoiding the previously obligatory in person appointment at the *prefecture*. ([Campus France Stay Permit Renewal info](#)).

Classes: In-person instruction is permitted at half capacity ([January 22nd French Ministry of Higher Education circular](#)). Starting May 19, campuses re-opened at maximum 50% total capacity of their space, strictly following all sanitary protocols.

<https://www.gouvernement.fr/info-coronavirus/education>.

Studio courses & Labs: Courses in fields such as science (biology, chemistry, physics, etc.), medical/health sciences, sports sciences, fine arts (graphic arts and design, studio art, etc.) that cannot be delivered virtually are authorized to continue in-person instruction (at 50% the total occupancy of the classroom space).

Exams and entry exams: In-person end of term exams are authorized and are currently underway (<https://www.gouvernement.fr/info-coronavirus/education>); however, many universities are finally opting for remote or hybrid models of final assessment.

Internships: Students currently enrolled in for-credit internships can continue their work remotely or in-person depending on the host company/organization's protocol.

Libraries, computer labs and cafeterias: university libraries and computer labs are open, and cafeterias are open for in-person dining. Take-away service is still offered. See the CROUS' interactive map for facilities by region, their services and hours. Student meals are being offered by CROUS cafeterias for 1 euro.

<https://www.etudiant.gouv.fr/fr/le-repas-au-crous-passe-1-euro-pour-tous-les-etudiants-2314>



Administrative, Health & Social Services: university health & social services remain fully accessible (including mental health support services), with some non-essential administrative services accessible by appointment only.

Residence Halls: University housing is open but students who can easily move home are encouraged to do so. International students or those far away from home are authorized to remain in student housing.

Workplaces

The government has reinforced [the guidelines applicable to the specific work environment as of June 9th](#) as indicated in the 4-step re-opening plan: <https://travail-emploi.gouv.fr/IMG/pdf/protocole-national-sante-securite-en-entreprise.pdf>.

Employers are still encouraged to ensure frequent ventilation of enclosed areas of the workplace, to permit employees to miss work for vaccination (vaccination is not obligatory and is confidential), and to make antigen auto-tests available to employees for voluntary use.

Working from home is no longer required as of June 9, and employers can set a number of days for working in the office and at home.

The guidelines currently state:

- Working remotely is still strongly advised but not required, at least until September 2021.
- Physical distancing (at least 1 meter between individuals and/or workstations, and **2 meters during coffee breaks and/or meals**)
- Obligatory mask wearing (in closed and/or shared spaces) and the responsibility of the employer to provide masks. **Only Category 1 cloth/fabric masks or disposable medical/surgical masks are authorized.**
- The promotion of regular, thorough handwashing
- Regular mechanical or manual ventilation of the premises
- Routine disinfecting at least once a day of all surfaces and objects
- Meetings should still take place virtually when possible but if in person, physical distancing recommendations (1 meter between individuals) should be respected. Moments of “conviviality” are authorized provided that there are no more than 25 people involved, the *gestes barrières* are respected and that the event takes places preferably outside.
- Management of the flow of people to avoid excessive crowding and crossing of individuals

Employees are instructed to stay at home should they develop Covid symptoms or if they have recently been in contact with someone who has tested positive for the virus. **Obligatory temperature checks or PCR tests** at the workplace are not authorized.

Gatherings, Socializing & Cultural Activities

The government currently recommends limiting private gatherings to 6 adults and sets the maximum authorized grouping at 10 adults for public gatherings. These limitations do not apply to group visits led by a certified guide. Guided visits (outside) can thus be organized.

A full list of openings and capacity limits for cultural, entertainment, socializing and sports venues can be found here: <https://www.service-public.fr/particuliers/actualites/A14940>

Associated fines for not adhering to protocols

A **fine of 135 euros** may be applied in the event of non-compliance with COVID protocols, including wearing masks and respecting curfew. Repeat offenders can be fined up to **3,750 euros** and could risk 6 months of prison, community service, drivers' license suspension of up to 3 years maximum. [Fines for not complying with curfew](#)

Local travel restrictions

Everyone **residing in France** must adhere to French regulations concerning mobility. The current situation allows and requires the following:

In France

- Anyone travelling during curfew hours on trains, flights, or intercity buses must fill out a Curfew Authorization Form [Authorization form required](#).

- For travelers to Corsica, a declaration of honor must be completed by passengers which must be printed and signed, will be required upon boarding by the transport company. Passengers must have completed an RT-PCR or antigenic test 72 hours before departure.

In Europe

- European borders are open, but travelers must follow all requirements and restrictions to enter other EU countries from France.
- As of June 9, travel restrictions are loosened for travelers coming into France from the European Area.
 - **Vaccinated travelers** do not need COVID test results
 - **Non-vaccinated travelers** must provide recent, negative PCR or antigen results (taken within 72h of departure).

Pass Sanitaire: An electronic or paper-based “Pass Sanitaire” is in place starting June 9 to facilitate travel and access to certain events. (see “Tools” on page 8) Starting July 1, the Pass Sanitaire will facilitate travel within the European Area. <https://www.gouvernement.fr/info-coronavirus/loisirs>

Details concerning mobility in and out of France can be found at this French government site: [International Mobility Information](#) in French and in English at [Advice for Foreign Nationals in France](#). Further information is also available on the European Union website: <https://reopen.europa.eu/en/map/FRA>

COVID Case Management in schools

Primary & Secondary Education:

The government has introduced a massive Covid screening program and has again reinforced the COVID protocol that is in place in primary and secondary schools; as of April 26, classes are systematically closed for 7 days as soon as there is just 1 confirmed case of a COVID. [Updated School Protocol](#).

Higher Education: [Higher Education COVID info](#)

Most French institutions of higher education (as is also the case for companies and businesses) have published their campus COVID protocols on their websites. Here are two examples from the Université Sorbonne Nouvelle <http://www.univ-paris3.fr/covid-19> and the Université Claude Bernard Lyon 1 <https://www.univ-lyon1.fr/protocole-sanitaire>.

This committee contacted both the *Académie de Paris* and the BEESP (*tutelle des établissements d'enseignement supérieur privé*) of the Paris *rectorat* and received this feedback in writing:

For study abroad programs in France that are registered as *Etablissements d'enseignement supérieur privé hors contrat*, it is advised that you reach out to your *rectorat* or *académie* to learn what the process is for declaring positive cases of COVID within your program participants, faculty and staff. The *Académie de Paris* has indicated that we should declare confirmed cases by emailing the ARS at ARS-DD75-alerte@ars.sante.fr. Further information concerning the COVID crisis can be obtained by contacting the educational officials at covid19.esri@region-academique-idf.fr (for Ile de France).

Sports and exercise

A progressive, 3-step, re-opening of sports venues and the resumption of collective sport activities began on May 19 (https://www.sports.gouv.fr/IMG/pdf/tableau_mesures_sanitaires_sport.pdf).

- Indoor and outdoor physical education/sports (including contact sports) are permitted in schools, provided gauges and protocols are respected.
- Sports Science students, professional and pre-professional athletes, those with a medical prescription for a certain activity, etc. can participate in indoor and outdoor sports.
- Outdoor Individual sport (walking, running, biking, hiking, etc.) is permitted. Indoor individual sport (no contact) can resume and gyms can open on June 9.
- Group athletic activity in public places (fitness classes, walks and hikes, etc.) must be limited to 10 people maximum per group and must maintain the physical distance of 2 meters between people.
- Outdoor sports equipment and sites are open and accessible. <https://www.sports.gouv.fr>
- Participants are not required to wear a mask during sports.
- Outdoor sports venues can welcome a maximum of 1,000 spectators.

A full list of protocols and guidelines concerning sports activities can be found here:

<https://www.sports.gouv.fr/accueil-du-site/article/decisions-sanitaires-applicables-au-sport-a-partir-du-19-mai-2021>.

Student Support

The Ministry of Higher Education & Research has established a student mental health support website (with an English Language version) that compiles all the contacts and services related to mental health support for students during the COVID-19 crisis. The website covers all regions of France, and in addition to mental health support also serves as a resource for information about financial support, student housing, and health care. <https://www.soutien-etudiant.info/>

On January 21st, the government announced a mental health care package (a “*chèque psy*”) to allow students in psychological distress access to free mental health support.

Several Hotlines and free resources are available to students:

- A free 24/7 hotline monitored by the Association SPS (*Soins aux Professionnels de Santé*) for students has been opened and can be reached here: <https://www.asso-sps.fr/prise-en-charge/etudiants>
- <https://www.nightline.fr/paris>, a student proposed/supported hotline to support peers (non-professional) is available everyday between 9pm to 2:30am: +33 1 88 32 12 32
- The BAPU (*Bureaux d'aide psychologique universitaires*) have psychologists, psychotherapists and psychiatrists available to students in need. Addresses and contact information can be found here: <https://www.etudiant.gouv.fr/fr/besoin-d-une-aide-psychologique-1297>
- [SOS Amitié](https://www.sos-amitie.fr) at +33 9 72 39 40 50 (24/7 in French),
- [SOS Help](https://www.sos-help.fr) +33 1 46 21 46 46 (3pm-11pm, in English)
- [Fil Santé Jeunes](https://www.fil-sante-jeunes.fr) at +33 800 235 236 (9am to 11pm for ages 12-25).

[Ameli](https://www.ameli.fr) has a list of additional resources.

City websites also list support specifically aimed to help the students studying there. Examples:

- In Paris: <https://www.paris.fr/pages/confinement-les-dispositifs-pour-les-etudiants-15717>
- In Strasbourg: <https://www.strasbourgimesesetudiants.eu/-/aide-pour-les-etudiants-du-territoire-covid19>
- In Aix en Provence: <https://www.aixenprovence.fr/Etudiants-vos-dispositifs-d-urgence>

On April 15, the government announced a special provision for 10 free sessions with a psychologist for children and adolescents between the ages of 3 and 17. <https://www.gouvernement.fr/forfait-100-psy-enfants-10-seances-sans-avance-de-frais>



ADDITIONAL LINKS & GENERAL RESOURCES

An English summary of information concerning the current situation in France, mobility, visas, testing, etc. can be found here: <https://fr.usembassy.gov/covid-19-information/>

For information concerning every country in the European Union, and for details on all aspects of the Covid-19 crisis in Europe, see the following website: <https://reopen.europa.eu/en/>. And for information specifically for France: <https://reopen.europa.eu/en/map/FRA>

For current information, including health recommendations and measures, from the French government on the COVID-19 situation in France, see the following website: [Main COVID-19 Government Website](https://www.gouvernement.fr/main)

Access to daily communiqués with daily statistics and key messages: [Daily Communiqués by French Government](https://www.gouvernement.fr/actualites)

Official website dedicated to Student Life in the French universities: www.etudiant.gouv.fr

Timeline of government actions [French Government Actions](https://www.gouvernement.fr/actions)